



# CROSSROADS GOLD

## About Crossroads Gold

Crossroads Gold Corp. ("Crossroads") (TSXV:CRG) is a Canadian gold exploration company backed by the Fiore Group and focused on high-potential gold projects within two hours drive from Melbourne in Victoria State, Australia—one of the world's premier gold-producing jurisdictions.

Crossroads aims to deliver new gold discoveries in a Tier-1 jurisdiction while generating long-term value for shareholders. Crossroads' portfolio includes two assets: the Steiglitz Gold Project, a historical high-grade producer within the renowned Bendigo Gold Belt, and the Pheasant Creek Project, encompassing a 232km<sup>2</sup> land package located directly adjacent and only 4km from the Southern Cross Sunday Creek gold-antimony discovery. Both projects are underexplored with modern technology and situated in highly prospective geological belts with demonstrated potential for epizonal and mesozonal orogenic gold systems.

Crossroads is led by an experienced management and technical team with deep Australian and global exploration expertise. With excellent infrastructure, year-round project access, and strong regulatory support, Crossroads is well positioned and well funded to advance its two projects through systematic modern exploration and drilling.

## Investor Highlights

- ✓ **Australian Gold Exploration:** Two under-explored gold projects in Victoria, Australia, in a historic mining belt with high geological prospectivity
- ✓ **Proven Mining Jurisdiction:** Industry-leading mining jurisdiction, near numerous major operating gold mines and projects (Sunday Creek Project, Fosterville Mine, Reedy Creek Project)
- ✓ **Experienced Geology Team:** Led by Australia-based geologist and CEO Rex Motton, former COO of Fosterville South, with 40+ years of global experience
- ✓ **Backed by the Fiore Group:** Fiore Group: Industry-leading private firm backed by Frank Giustra & Gord Keep focused on natural resources. \$1.0bn+ raised for mining companies in 2023-2026YTD
- ✓ **Fully Funded Phase 1 Program:** Recent \$5.2M financing with near-term work program planned for H1 2026 and targeting Phase 1 drill program
- ✓ **Pheasant Creek - Adjacent to Sunday Creek:** Pheasant Creek Project: 232km<sup>2</sup> land package adjacent to the Sunday Creek discovery held by Southern Cross (TSX:SXGC, \$2.7bn market cap)
- ✓ **Steiglitz - High Grade Potential:** Historical high-grade producer (38 g/t Au) from late 1800's (top 10 producer from Bendigo Zone)
- ✓ **Extensive Infrastructure:** Year-round project access and close to infrastructure, with both projects only ~2 hours drive from Melbourne

## Capitalization

|   |              |
|---|--------------|
| Financing Price <sup>(1)</sup>            | \$0.20/share |
| Shares O/S (Basic)                        | 63.5M        |
| Market Cap (C\$M) (Basic)                 | \$12.7M      |
| Options <sup>(2)</sup>                    | 6.2M         |
| Warrants / Broker Warrants                | 20.8M        |
| Shares O/S (FD)                           | 90.4M        |
| Market Cap (C\$M) (FD)                    | \$18.1M      |
| Cash (Post-Listing) (C\$M) <sup>(3)</sup> | \$4.9M       |

1) Based on Nov-25 sub receipt financing.  
 2) Assumes 2026 equity grant.  
 3) Post listing onto TSXV.

## Location: Victoria, Australia



## Leadership



**Rex Motton**, MAusMM(CP),FSEG  
CEO, Director



**Brenda Nowak**  
CFO, Corp. Secretary



**Carson Sedun**, MBA  
VP, Corp. Development



**Derrick Pattenden**, CFA  
Director



**Paul McNeill**, P.Geo.  
Director



**Joaquin Marias**, P.Geo.  
Director



**Rob McLeod**  
Advisor



**Gordon Keep**, MBA  
Advisor

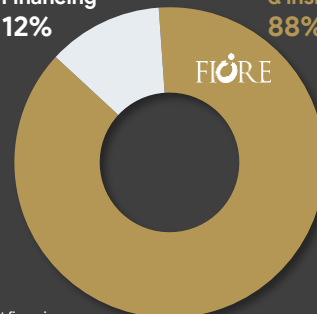


**Ryan Weymark**, P.Eng.  
Advisor

## Shareholder Base

Go-Public Financing  
12%

Fiore Group & insiders  
88%

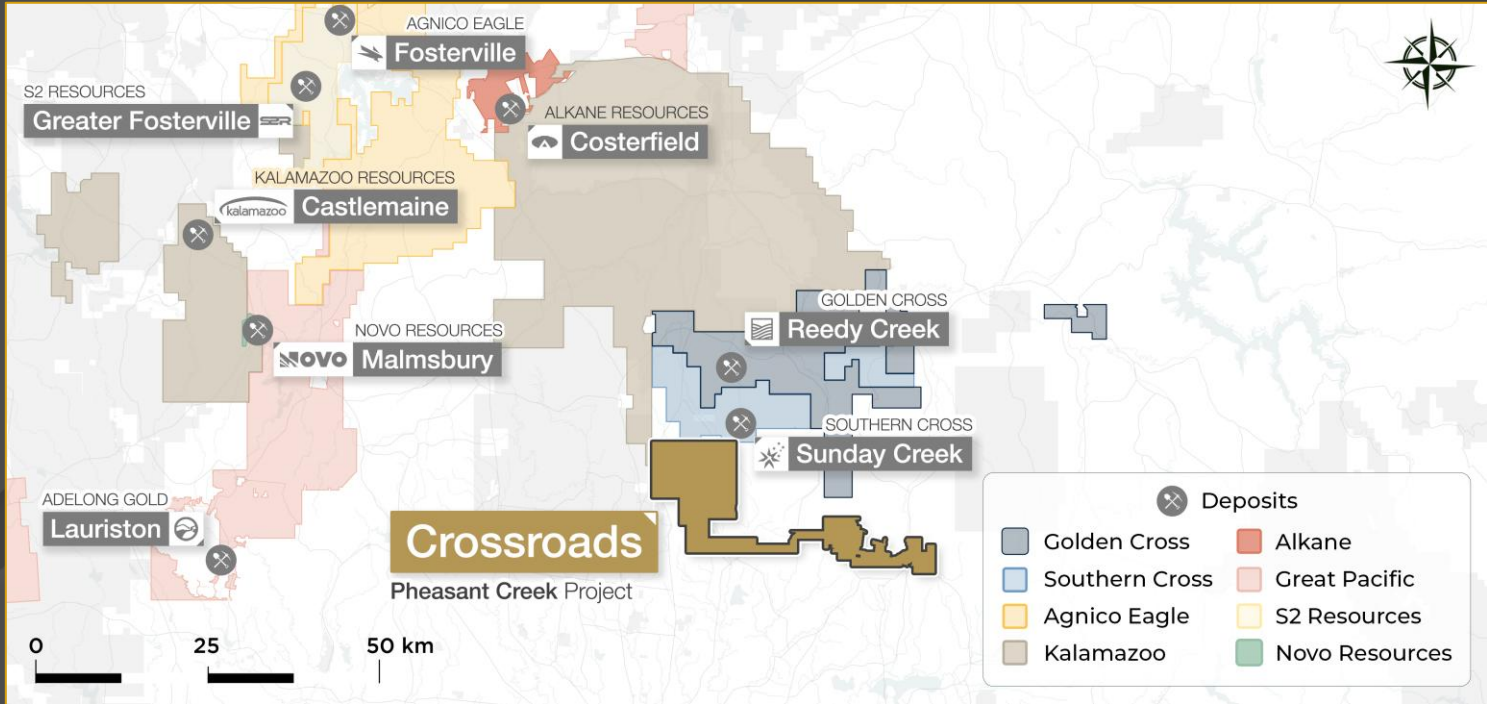


### Key Shareholders:

- Frank Giustra
- Gord Keep
- Fiore Management
- James Hutton
- Rex Motton



## Projects Overview



### Pheasant Creek Project

- Located ~60km north of Melbourne with year-round access
- Directly adjacent to Southern Cross’ Sunday Creek, only 4km from main deposit (one of the world’s best epizonal discoveries)
- Occurs within the Melbourne Zone of the Lachlan Fold Belt
- Gold mineralization occurs as epizonal fault-controlled quartz veins sometimes associated with earlier dioritic dykes as at Pheasant Creek (analogous to Sunday Creek)
- 6km of unexplored auriferous dykes established from 1890s mines, not drilled
- Strong pathfinder anomalism (Au-As-Sb)
- Fully funded Phase 1 program to commence in H1 2026

### Steiglitz Project

- Located ~80km west of Melbourne with year-round access
- Geologically lies in the Bendigo Zone of the Lachlan Fold Belt and in the southern extension of the Fosterville Sub Domain
- An early goldfield discovery in Australia, (operated between 1855 & 1911 producing ~250,000 oz Au)
- 10th largest gold producer in the historic Bendigo gold belt, with recovered grades of 38 g/t Au
- Unexplored: Only 5 drillholes at Hanover in the whole field
- Considered a highly prospective location for the discovery of Fosterville type epizonal gold mineralization

### Contact

**Rex Motton**  
CEO, Director

**Carson Sedun**  
VP, Corporate Development

Follow Us



#### Head Office

Suite 3123 – 595 Burrard Street  
PO Box 49139  
Three Bentall Centre  
Vancouver, BC V7X 1J1

E: [investors@crossroadsgold.com](mailto:investors@crossroadsgold.com)

### Corporate

|                       |                         |
|-----------------------|-------------------------|
| Auditor               | Baker Tilly WM LLP      |
| Legal Counsel         | Farris LLP              |
| Transfer Agent        | Odyssey Trust Company   |
| Qualified Person (QP) | Andrew Hamilton, P.Geo. |
| Financial Year End    | July 31                 |